

GRAB
YOUR
FAVORITE
FURNITURE

ΔRCHEOOO
QUALITY & EXPERIANCE



DESIGN
BASED
ON YOUR
STYLE



MAKE YOUR INTERIOR BETTER

We offer a wide range of stylish and durable furniture for homes, offices, and commercial spaces.

Our expert team ensures every piece meets high standards of craftsmanship and design.

Experience exceptional customer service and tailor-made solutions with our premium furniture collections.



ARCHEOOO

your trusted partner in quality furniture

OUR WORK PATTERN

Design and Planning:

- Conceptualize designs, create blueprints, and select materials.

Material Procurement:

- Source high-quality materials.

Cutting and Shaping:

- Cut and shape materials to size.

Assembly:

- Join components ensuring structural integrity.

Finishing:

- Sand, stain, paint, or upholster as needed.

Quality Control:

- Inspect for defects and make adjustments.

Packaging and Shipping:

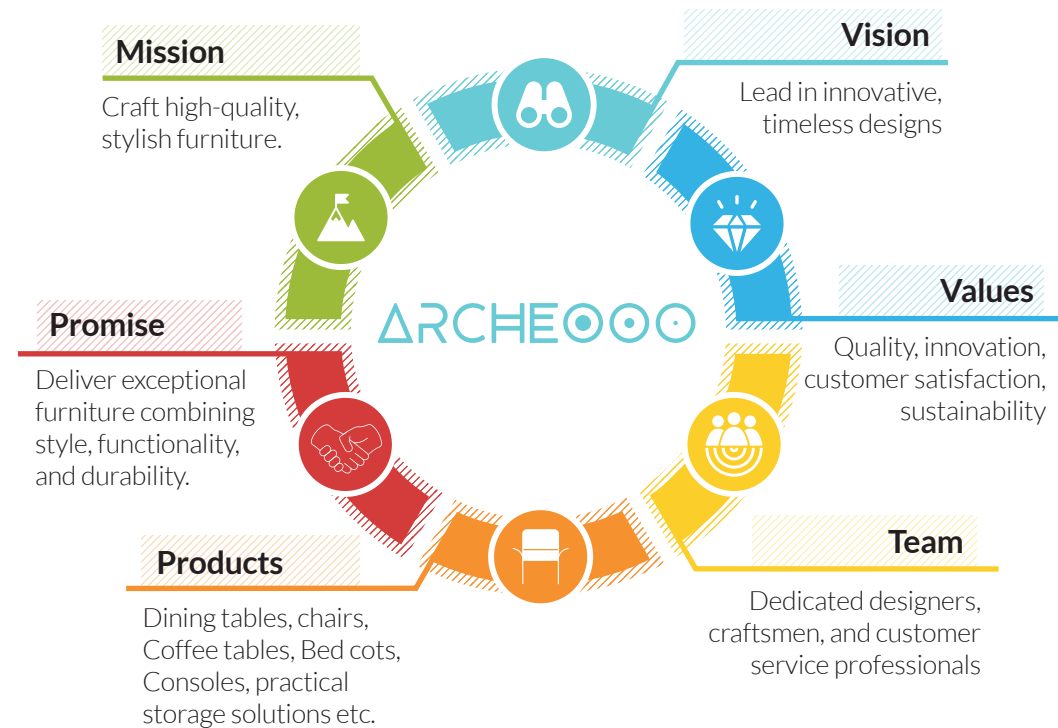
- Package carefully and coordinate shipping.

Customer Service:

- Handle inquiries and provide after-sales support.



ABOUT US



heaven of comfort in minimal

SOFT FURNITURES



Designed for comfort and relaxation. These pieces add a cozy and inviting touch make it perfect for indoor spaces





Modular Sofa Set

Upgrade your living space with this sleek, contemporary modular sofa set. Plush cushions and versatile sections ensure maximum comfort and style.



Modern Chaise Lounge

Stylish chaise lounge featuring a unique ribbed texture and light, textured fabric. Supported by a wooden base. It combines comfort & contemporary design.



Sectional Sofa

Featuring a sleek design with rounded edges and plush cushions, it offers both style and comfort. This versatile piece enhances your decor with its contemporary elegance.

Modern Dining Chair

Stylish chair with a rounded backrest and light-colored upholstery. Dark wood frame adds a sleek contrast. Perfect for contemporary dining table.



Sleek Arm Chair

Enhance your space with our collection of stylish armchairs. Featuring a variety of designs, from modern to classic, each chair offers comfort and elegance. Perfect for any room, these armchairs combine quality craftsmanship with aesthetic appeal.



Contemporary Arm Chair

Stylish armrest-less chair with a rounded, plush seat and backrest. Supported by a light wood frame with a slanted panel. Perfect for contemporary interiors.



classic charm in modern simplicity

HARD FURNITURES



Hard furniture forms
the backbone of any
room's layout,
providing essential
surfaces and storage
solutions.





Traditional Bed

Elegant wooden traditional bed features intricate carvings and decorative elements. Designed to add sophistication to any bedroom, combines quality craftsmanship with timeless design. Perfect for those who appreciate both comfort and style.



Entryway Console

Stylish console tables designed to combine functionality with aesthetic appeal. Perfect for creating a welcoming and sophisticated entrance to your home.



Traditional Dining Table

Transform your dining area with sophisticated and elegant dining table with chair. Perfect for creating a refined and inviting atmosphere in a traditional touch

Stylish Wooden Benches

Enhance your space with stylish wooden benches. Featuring unique designs, each bench offers both comfort and aesthetic appeal, with quality craftsmanship.



Chic Coffee Tables

Chic coffee tables, with a range of designs from sleek modern to timeless classic, each table offers both style and practicality. Perfect for enhancing any living space, crafted to complement your decor.



Wooden Bedside Tables

Enhance your bedroom with stylish wooden bedside tables. Featuring unique designs and practical storage solutions, Perfect for adding a touch of sophistication to any bedroom decor.



elegance of tradition in minimal

WOVEN FURNITURES



Durable, lightweight,
and eco-friendly, rattan
furniture offers a
natural, rustic look for
both indoor and
outdoor spaces.





Elegant Wooden Chair with Woven Details

Upgrade your space with this elegant wooden chair featuring a woven seat and backrest. Perfect for adding a touch of rustic charm, it combines comfort and durability. A versatile addition to any room.



Mid-Century Modern Arm chair and Side Table

Elevate your space with this elegant armchair and side table with woven panels and tufted cushions. Stylish, comfortable, and perfect for any room.



Mid-Century Modern Console

The stylish mid-century modern console combines elegance and functionality. This piece adds a touch of sophistication to your decor.

Modern Minimal Wooden Chair

Enhance your living space with this modern wooden chair featuring a woven seat and backrest. Perfect blend of natural materials and contemporary design.



Minimalist Wooden Bench

Elegant wooden bench featuring a woven seat. Its minimalist design and natural materials make it a perfect addition to any contemporary interior. Ideal for both casual and formal settings



Mid-Century Coffee Table

Stylish wooden coffee table featuring a mid-century modern design. A combination of open and closed storage spaces



Elegant Wooden Folding Chair

Stylish wooden folding chair with woven cane backrest and seat. Perfect for any setting, combining practicality with classic craftsmanship



versatile elegance for every space

MISC FURNITURES



Variety of furnitures,
designs offer both
functionality and
aesthetic appeal
perfect for any room.





Wooden Windows

Versatile wooden windows, featuring a variety of designs, from louvered to folding, each window offers an aesthetic appeal and functional design to complement your decor.



Wooden Carvings

Elegant wooden cabinet features intricate carvings. Perfect for combining functionality with aesthetic appeal in any room



Armchair with Ottoman

Armchair and ottoman featuring a variety of designs and materials, each set combines comfort with unique texture and visual interest, adding a touch of contemporary elegance to any room.

Variety Stair Case Handrail

Enhance your home with this elegant staircase handrail featuring wooden side panel with intricate carvings. The glass railing adds a modern touch, creating a sophisticated and visually appealing design



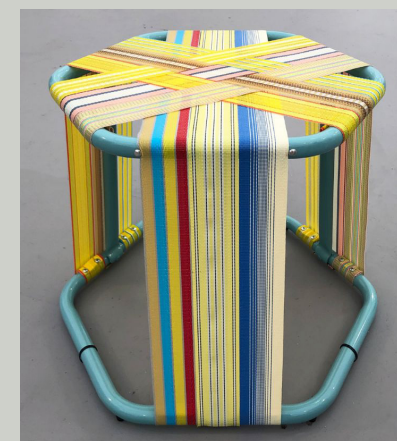
Stylish Metal Chair

Enhance your space with stylish metal chairs. Featuring unique designs, each chair combines modern aesthetics with comfort. Perfect for adding a touch of contemporary flair to any room



Versatile Stools

Versatile wooden stools, featuring a variety of designs and vibrant colors, each stool combines modern design with functional art. Perfect for adding a unique style.



ELEVATE YOUR THOUGHTS

<https://archeoooo.com>

CONTACT NOW

☎ +91 9846 395100

💬 info@archeoooo.com

